

Bulletin Number: MA_IB_0011	Distribution Date: 8/15/19	Effective Date: 8/12/19
Contact Point: Metrc® Support	Subject: New Features in Metrc and CSV Upload Restrictions	
Reason: Metrc is providing an update on our most recent feature release for discontinuing harvest waste in the system.		


Greetings Metrc Users,

Metrc is pleased to provide information on our newest enhancements within the software. Users with plant permissions will now have the ability to take corrective action on incorrect harvest waste entries by discontinuing the waste back into the harvest batch. The transfer manifest will now have item specific details and source package information for each package where applicable.

Metrc has also now implemented row count restrictions on CSV uploads into the system.

Please find on the following pages a detailed description of the enhancements:

New Button: Discontinue Harvest Waste

When drilling down into a harvest batch, users can now toggle to the Waste tab and find a new discontinue () button next to each waste entry as seen in **Figure 1**. Once the discontinue button is selected, a confirmation box (**Figure 2**) will populate for the user to confirm the action. When the OK button is selected, the waste entry is removed, and the waste weight is added back into the weight of the harvest batch. Once the waste recorded has been discontinued, the weight will be returned to the overall current harvest weight.

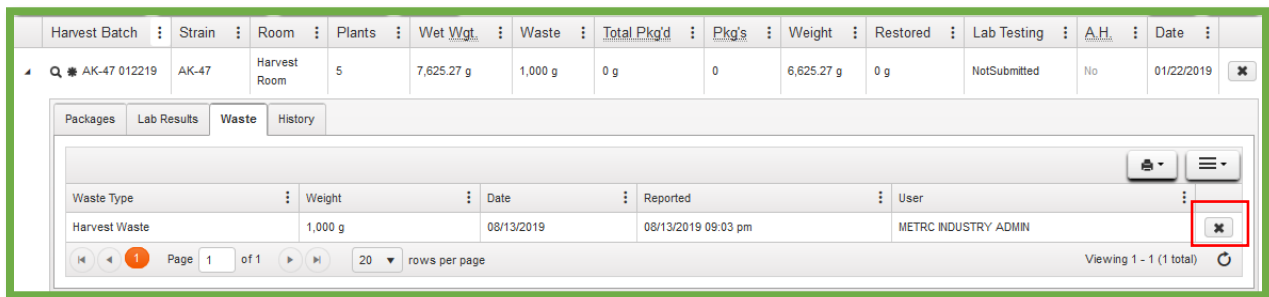


Figure 1: Discontinuing Harvest Waste

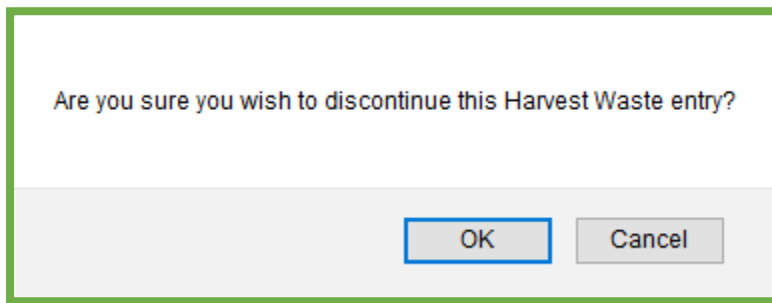


Figure 2: Confirming Discontinuation of Harvest Waste

Additional Information: Transfer Manifests

When registering and receiving transfers, users will now see that the Transfer Manifest provides additional information about the packages included on the manifest. Each package now includes the item details (Strain, Unit Weight, Unit THC Content, etc.) and source package information.

Package # 1	Production Batch No.	Item Name	Quantity
ABCDEF012345670000015892 Lab Test: TestPassed Status: Accepted		Buds (Buds)	Shp: 300.0000 g Rcv: 300.0000 g GWT: 5025.0000 g
Item Details	Strain: Kayote Blu		
Source Harvest(s)	Kayote Blu Harvest 6/3		
Source Package(s)	ABCDEF012345670000015891		

Figure 3: Additional Details on Transfer Manifest

System Restrictions: CSV Row Count

Metrc processes all records in a CSV file as a single upload transaction. Before storing any data, Metrc reviews each record to make sure there are no errors (such as a data type mismatch or the wrong number of values). If any record in the file generates an error, the upload is rejected. Metrc will report each error and the row on which it occurred. The user must then modify the CSV file and retry.

With this information in mind, Metrc has implemented a restriction of 500 rows maximum for each CSV file uploaded into the system. If this maximum is exceeded, the data can be split into separate files that do not exceed the 500-row maximum.

The exception made at this time will be for lab test results. There is currently no maximum limit set for the lab results being uploaded via the CSV import.

This limitation applies only to CSV imports and does not apply to data interfaced through API.

Please feel free to contact support at support@metrc.com or 877-566-6506 with any questions.